

Wishing all our clients and their animals a happy and healthy Summer!



NEWSLETTER

Summer Edition 200

Bega Veterinary Hospital: 02 6492 1837
Monday to Friday: 8.30 - 5.30pm
Saturday: 9-12pm

Cobargo Veterinary Hospital: 02 6493 6442
Monday to Friday: 9 - 5pm
Alternate Saturdays: 9-12pm

After-hours: Bega: 02 6492 1837
www.begacobargovethospitals.com.au

WHAT'S NEW!

Sadly we will be saying good-bye to nurse **Emma** in December. She has been with us for a year while her husband completed his medical training in Bega. She goes back to her nursing job in Gungahlin and will be missed, but has left us with many new tips and ideas to remember her by!

Nurse **Lauren** has become a full-time member of the team while she completes her certificate four in veterinary nursing. New staff member **Carly** has recently started with us as a nurse while undertaking nursing training (certificate 2 in animal studies) through TAFE.

We also welcome **Margaret O' Conner** as a new nurse/receptionist for the Cobargo clinic.

English vet Anna has headed home in December and has been replaced by **Emily Darmody**, a Victorian who completed her degree in Perth.

Claire Hynes, a large and small animal vet who did some locum work for us recently is starting full time with us from the middle of February.

BACK TO SCHOOL CHECKLIST:

Summer has been a busy time for everyone, including vets! The following is a checklist for your pet's health over the warmer months:

- _ Remember to check your pet for ticks regularly and use a flea and tick preventative
- _ Never leave your dog in a car during the summer - they very quickly become very hot and it will kill them
- _ Pets that are going into kennels will need to be up to date with their vaccinations, including kennel cough vaccination
- _ New puppies and kittens acquired over the holiday period must be kept up to date with vaccinations, worming and flea treatments. Feel free to come in and ask if you are unsure what your new pets requirements are. Remember it is important that the right diet is fed especially to growing animals to ensure they get the nutrients they need. Our staff are happy to help you with any advice or information you may need to help you and your new pet get off to a great start.

TETANUS IN HORSES

Tetanus is a deadly disease caused by *Clostridium tetani*. Horses are the most susceptible of all domestic animals to tetanus. The bacteria live in soil and the environment and horses can be exposed to the infectious spores via cuts and abrasions. Tetanus causes signs such as spasms and stiffness, lockjaw and a reluctance to walk or feed from the ground. It is rapidly progressive and often fatal to horses. There is no specific treatment for the disease, only supportive treatment.

The tetanus vaccine is highly effective at preventing the disease. We recommend regular vaccination as outlined below. If your animal has an injury and is not up to date with vaccination then it is very important that he receives both short term and long term tetanus vaccine.

From 3 months of age and all horses with unknown tetanus vaccination history:

Initially: THREE vaccinations TWO weeks apart then: Booster every year



Staff Profile

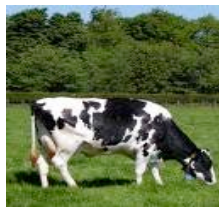


Name: Wayne Mizon
Position: Veterinarian
Background: Wayne graduated from Sydney University in 1983 and started out in mixed practice in the Hunter Valley before heading south! He has

recently celebrated his 21st year working at the Bega Vet. He usually works one day a week at the Cobargo clinic.

Interests: Wayne has developed a special interest in small animal work, particularly small animal cardiology and orthopaedics and medicine.

Hobbies: In his spare time Wayne enjoys archery and martial arts, including kendo, fencing and tai chi



Toxic Mastitis
 'Toxic Mastitis' is the term used when a cow is suffering from an acute infection with an environmental mastitis, usually due to bacteria called coliform bacteria e.g. 'E-coli'. These bacteria live in the environment and enter the udder, often when a cow has just calved and is dripping milk. Mud, heat, humidity and manure all increase the numbers of coliform bacteria in the environment. The danger with these cases is the bacteria produce toxins that circulate throughout the body and can rapidly cause 'endotoxic shock' and the cow can die. Initial signs include a high temperature, weakness, dehydration and downer cows. Affected quarters will initially appear hard swollen and warm to touch however they quickly become cold and gassy. Often the milk expressed is watery. Treatment **MUST** be initiated early on to have any hope of curing the cow. Intra-mammary treatment is not enough: they require injectable antibiotics (eg engemycin) and anti-inflammatories (eg tolfedine) to help with the endotoxic shock. Oxytocin can be used to try and increase milk let-down and also regular stripping out of affected quarters.

Dangerous plants: fireweed

We have recently seen clinical cases of toxicity of both these plants.

Fireweed is an unfortunately common sight in this area. The plant toxins affect all livestock, with cattle and horses being more susceptible than sheep and goats. Animals that eat a large amount of fireweed may show signs including decreased milk production and lower growth rates.



Animals that have been exposed to the plant for several years can die due to prolonged exposure to the plants toxins, due to irreversible liver damage. There is no treatment for affected animals: the toxin in fireweed causes irreversible liver damage. The only option for producers is to remove animals from affected pastures or to sell chronically affected livestock. Control of fireweed traditionally involves spraying with recommended herbicides.

Note To Dairy Farmers:

Dairy Australia has agreed to introduce a voluntary ban on oestrodial products in lactating cows (Ciderol) as of January 2008. Previously these products have commonly been used in non-cycling cows or heifers in conjunction with a CIDR. Expert advice (FAO/WHO) indicates these products are not a food safety issue, however the ban has been put in place to comply with EU trading policies. The current ban is voluntary however later on this year oestrodial products will not be available for use in dairy cattle. Alternative reproductive programs are available for use. Finding which program will be best suited for your business can be discussed with one of our vets.



Safety First When Injecting Cattle:

Current recommendations from Cattle Care Australia for farmers on the LPA QA program are to limit injection volumes to no more than 10ml per injection site in the neck. These recommendations are a meat quality control measure to limit damage done to carcasses. In complying with these recommendations it is important to bear in mind the OH&S implications involved in vaccinating cattle in the neck and be sure to do so only if there are facilities to do it safely.

FLEAS!!



This time of year is notorious for fleas in dogs and cats. We often see dogs and cats and their frustrated owners with problems controlling and treating fleas on their pets. Some animals have 'flea allergy dermatitis' which causes a severe itch and inflammation because they are allergic to the flea saliva - they only need one flea to bite and it will set them off. This is the most common cause of allergic dermatitis in dogs and cats. People often complain that they cannot successfully treat fleas. Here are a few tips to help:

- * Use a flea treatment regularly. The spot-on's should be used throughout the year, especially in allergic dogs. During the summer they should be applied fortnightly. Alternative to the spot-on's include Proban tablets and sprays and rinses (e.g. Permaxin rinse (NOT IN CATS), frontline spray

NB: when applying frontline avoid getting the dog wet for 48 hours BEFORE and AFTER application

- * For every one flea you see on your animal, there is another **20 fleas** in the environment. Flea bombs/sprays and hot washing all the bedding is imperative if your pet has fleas

- * Treat all in contact animals regularly, particularly if you have one pet that has a flea allergy. Remember cat flea's can also